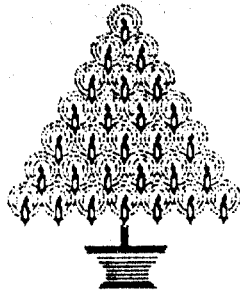


THE RIVIERA REPORT

NEWSLETTER OF THE RIVIERA HOMEOWNERS ASSOCIATION

"A NON-PROFIT ORGANIZATION DEDICATED TO CIVIC SERVICE TO THE RIVIERA COMMUNITY AND ITS RESIDENTS."

Thursday
December 3, 1992
Doors Open 7:00 p.m.
Program begins 7:30 p.m.



Riviera School
Cafeteria
365 Paseo De Arena

HAPPY HOLIDAYS!

We cordially invite you, your family, friends and neighbors to our holiday program. There will be lots of holiday fun and excitement for all, especially kids! We will even have a very special mystery guest . . . guess who? The PTA will have a short mini-session. Kind of an experiment for both them and us. Next the 4th graders of Riviera school will fill the cafeteria with holiday music for our listening pleasure. After a brief pause to set-up, Jim Gamble will delight all the kids and the kid in us all with his, *TWAS THE NIGHT BEARFORE CHRISTMAS* puppet show. And finally our mystery guest! with a surprise for everyone! As this is a special time of the year we hope you can be our special guest and enjoy the show.

I'd like to thank councilman Don Lee, Chairman Ron Littlefair, and all members and guests that attended our October meeting. Hopefully we have begun trimming our sails - maybe we can reach an accord to trim those trees.

Donald A. Young Jr.

SANTA CLAUS IS COMING TO TOWN

The Torrance Police Association is once again pleased to provide to the community the Santa Claus Float. It will be coming to the Riviera December 6 to 8 (Sunday - Tuesday) starting from East (Newton st) to West (Paseo de Playa) for those days.



PRESIDENT'S MESSAGE

I would like to welcome all the new members who joined the Riviera Homeowners Association (RHA), and express my sincere appreciation to all the returning members. It is your support that provides the Board the capability to keep you informed of important and interesting topics that effect your community. If you have a Riviera Report that has a red dot on it, your renewal of membership is now due. Membership will enable you to receive the Riviera Report and be informed of the General Membership Meetings.

It was a pleasure to receive over 35 responses to our comment/topic interest section on the return RHA application form. Most comments requested continued support of the tree trimming effort. Other mentioned topics included rental property concerns, telephone pole removal, crime and traffic. In response to the various traffic issues, the Board asks for volunteers to support a traffic committee. Potential concerns are restricting turns at Calle Mayor/P.V.Blvd, and any future talk of opening streets between PVE and the Riviera. Contact me if you want to volunteer to made a difference.

Our last meeting had approximately 100 attendees to hear Councilman Don Lee discuss changes to the City tree trimming policy. The councilman will have city staffers work on the new policy language in conjunction with the RHA tree committee. For further information about the RHA tree program, read the article in this Report.

RHA is working with the newly formed Walteria Homeowners Association. They have selected their boundary to include residents between Hawthorne Blvd. and Newton St. to Vista Montana. The new boundaries of RHA are proposed to be defined on the East by Vista Montana to Bluff St. and Via Valmonte to the Palos Verdes Estates city limits. This represents the Eastern boundary for the Hillside Overlay Area in the Riviera. The Board has approved this recommendation which will provide better representation for residents in their respective areas. The final decision to change the Bylaws will occur at the February 4, 1993 General Meeting.

The December General Meeting is shaping up to be very entertaining. We look forward to working with the Riviera PTA and the elementary school students. I hope to see you there.



Doug Holker

HAPPY HOLIDAYS IN THE VILLAGE

Imagine walking in a quaint village where trees glisten with twinkling lights and carolers and holiday music fill the air. Stop and have some popcorn or maybe a cup of cider! Enjoy a puppet show, browse through shops, watch children getting their faces painted or get a balloon from a clown. Where you ask? Right here in the Riviera Village.

On Saturday, December 5 from 12.00 noon 'till 7:00 in the evening. The Riviera Village Association member business and the Richstone Center joyously invite you to the second annual "Riviera Village Holiday Festival." Come join in the festivities!

PROGRAM

12:00 - 2:00	"Twinkle" the Face Painting Clown
1:00 - 1:30	Alta Vista Choral Group
1:30 - 2:00	Jim Gamble's Puppets Present: <i>A VISIT TO SANTA'S WORKSHOP</i>
3:00 - 5:00	The Richstone Center Presents: The Chadwick Glee Club (2:00 - 3:00) Santa Claus and His Elves (3:00 - 5:00)
2:00 - 4:00	"Popcorn" the clown with balloons
3:00 - 3:30	Tulita Choral Group
3:30 - 4:00	Marionette Drill Team
4:00 - 4:30	Parras School Choral Group
5:00 - 6:00	Redondo Union Jazz Band

And refreshments at various stores, popcorn machines, and other special events: A portion of the sales from participating businesses will be donated to the "Richstone Center for the Prevention of Child Abuse". Enjoy the holidays in your village.

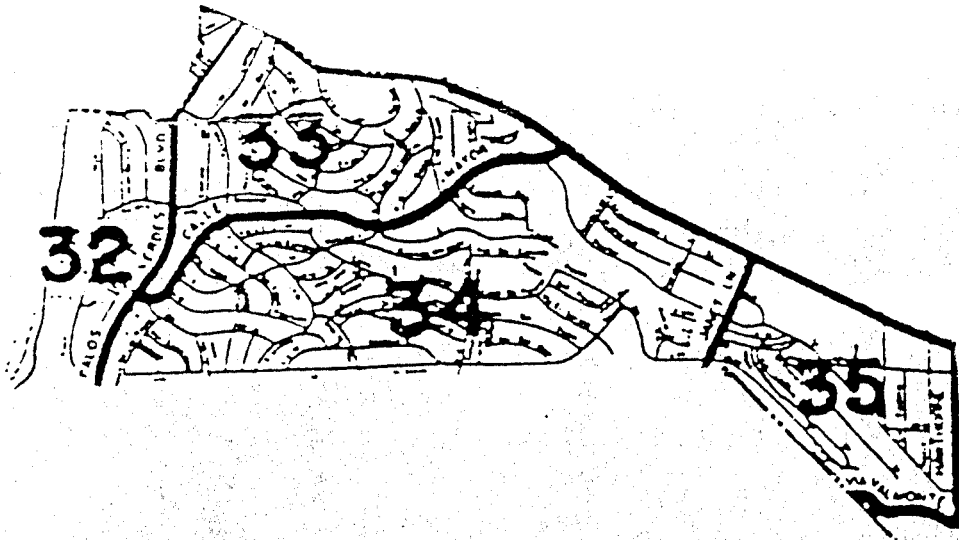
Riviera Village Association

CRIME REPORT

The following information was provided by the Torrance Police Department. Area 32 is between Palos Verdes Blvd. and the Ocean. Area 33 is between Calle Mayor and PCH / P.V. Blvd. Area 34 is between Calle Mayor and P.V. Estates to Janet Lane. Area 35 will be added to our next Riviera report. Area 35 is between PCH, Hawthorne Blvd., Via Valmonte, PV Estates, and Janet Lane. There have been no carjackings in our community, however there was one in North Torrance. The August through October statistics are provided below.

<u>AREA</u>	<u>32</u>	<u>33</u>	<u>34</u>
Residential Burglary	1	2	6
Commercial Burglary	1	1	0
Vehicle Burglary	1	5	6
Stolen Vehicles	3	5	1
Assault	1	0	3
Vandalism (over \$1,000)	2	0	2
Vandalism (under \$1,000)	4	3	2
Robbery	2	2	0

Doug Holker



MEMBERSHIP IN THE RIVIERA HOMEOWNERS ASSOCIATION

If your newsletter has a red dot, it means that you have not paid your renewal dues and this is the last newsletter you will receive until you rejoin.

OUTSTANDING LANDSCAPE AWARD

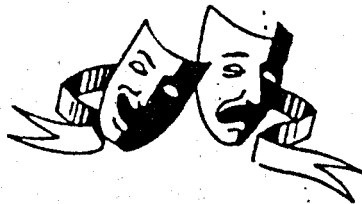


The Riviera Outstanding Landscape Award for October went to Harry and Marje Johnson of 452 Calle Mayor. This award is presented in conjunction with the Riviera Garden Club. The Johnsons have completely transformed a slope of ordinary ivy into a unique mixture of shrubs, perennial and seasonal color. The result is a wonderful alternative to the more common iceplant or ivy and it will even be water wise once established.

The lively mixture of plants includes bougainvillea, purple and white lantana and "candy apple" aptinia used as extensive ground covers along with drifts of daylilies and agapanthus that add height and color. Holly, richmondiensis, shasta daisy, impatiens, felicia and yarrow are among the nearly 30 varieties of plants that complete this lovely landscape. Thank you Harry and Marje for making the Riviera bloom with beauty.

Mary Lenihan and I would like to especially thank Ethel Sellares, Riviera Garden Club Landscape Chairperson for being our steadfast garden spotter, as we all have driven up and down the Riviera hills. We need your help too as you are out and about and spot a worthy recipient please call Mary at 378-7435 or Ruth at 375-4702.

Ruth Vogel



PALOS VERDES PLAYERS

Now playing - through 5 December: *THE MOUSETRAP* by Agatha Christie

SPECIAL CHRISTMAS PRODUCTION

Charles Dickens' *CHRISTMAS CAROL* and a delightful *CHRISTMAS FESTIVAL*

December 11, 12, 13, 18, & 20. Curtain 2:30 p.m

Adults \$8.00, Children \$5.00

Please call 326 2287 for reservations.



RHA TREE TRIMMING PILOT PROGRAM



As announced in the last *RIVIERA REPORT* here are the details of the RHA tree trimming pilot. This program is to encourage RHA members to cooperatively restore views blocked by vegetation by partially reimbursing RHA members. Due to the holiday festivities of our December meeting, applications will be accepted at our February meeting.

Once you and your neighbor(s) agree on the proposed trimming, you can fill out the form which will be available to the December meeting, and submit it in February. As announced, RHA will not fund neighbors who cannot agree on a plan of action. This pilot program has limited funding and applications will be taken on a first come basis, beginning with the February meeting. RHA will contribute \$10 toward your trimming project for each year your household has been a RHA member. The maximum per household is \$100, or the actual cost of trimming, whichever is less. Two or more RHA members may be involved with a single project and each may receive funding for that project. The \$100 applies per household, not project.

Applications will be accepted for a brief period starting at the February meeting and by postmark on mail following that meeting. Applications will not be accepted once the allocations of funds by RHA for this project have been committed. All applicants will be informed of funding determination by the end of February. Vouchers showing the amount of funding will be issued by RHA to each funded member. Members will choose their own tree trimmer. To be reimbursed, these vouchers must be returned with a copy of the paid receipt by August 31, 1992, when they expire.

If there are any questions regarding this program, please call:

Greg Anunson, (378 - 6384) Irene Shackelford, (373 - 1838) Jim Vogl (378 - 1803)
or Connie Sullivan (378 - 1554)

BOTANIST/HORTICULTURIST NEEDED

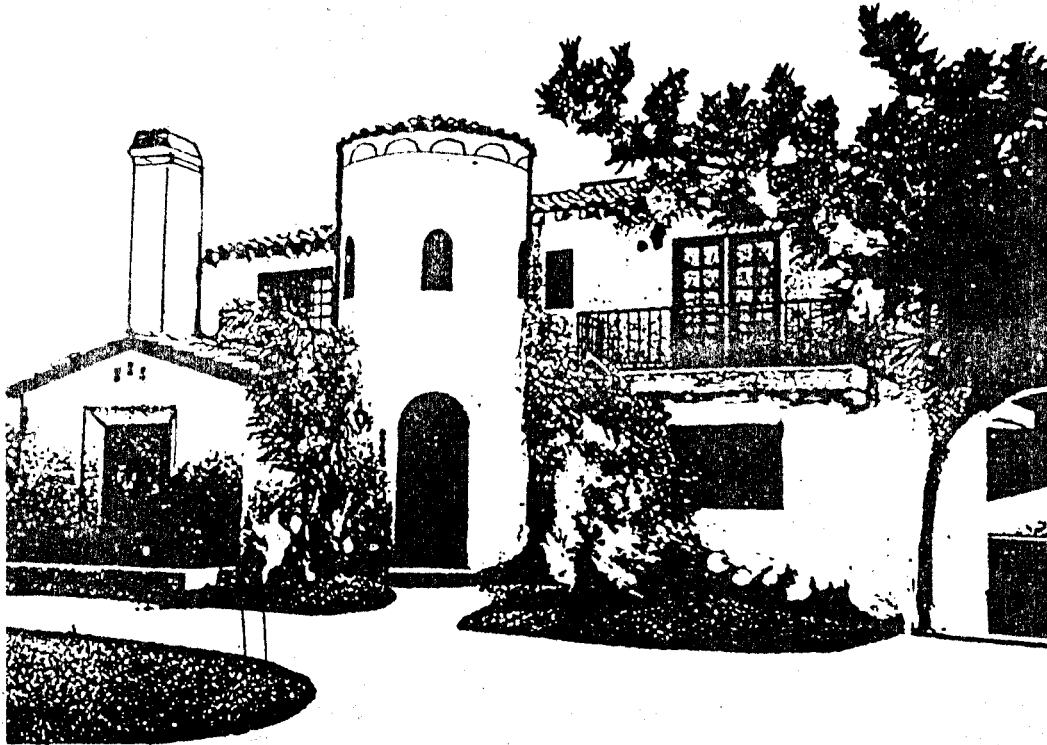
To help answer questions relating to trees, trimming, and the city tree program, RHA is looking for members who have a solid knowledge of vegetation like that found in Riviera. If you, or someone you know, is interested, please contact me.

Greg Anunson



RESIDENCE OF VINCENT & DANE DeLUCA

245 Paseo de Gracia



This 1939 bungalow home underwent a major renovation in 1989 - the 50th anniversary of its construction - adding a second story and enlarging the floor space to almost 3,000 square feet.


Despite the enlargement, the DeLucas, who have owned the home since 1985, strove to preserve the architectural integrity of the period. The front room with its large picture window, remains, as does the complete foundation, basement and garage. The roof tiles were crafted by an artisan to duplicate the unique striations of the original tile. The newly added California Spanish tower entrance is reminiscent of the first home in the Riviera. Even the wallboard was lightly covered by plaster to give a lath and plaster appearance and there are hardwood floors throughout.

Much of the interior also receive historical touches: alcoves in the tower, covered doorways, period furniture in the dining room, tile-accented fireplaces, and a wrought iron chandelier in the entry. But the modern conveniences abound: forced air heating, light and bright baths, a large white kitchen with tiled center island and a spacious master suite. The reconstruction is an excellent example of blending the beauty of our architectural past with the comforts of modern living.

Vince is a Riviera realtor and Dane is a nurse at UCLA.

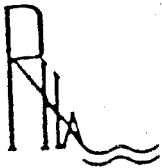
RIVIERA HOMEOWNERS ASSOCIATION
1992-1993

OFFICERS AND DIRECTORS



President	Doug Holker	378-8984
1st Vice President (Programs)	Don Young	373-8866
2nd Vice President (Membership)	Irene Shackelford	373-1838
Treasurer	Greg Anunson	378-6384
Secretary	Sue N. Babb	378-5821
Newsletter Editor	Jim Vogl	378-1803
Historian	Trish McDonald	375-9728
Hospitality	Janet Barnhart	378-6240
Landscape, Chairperson	Ruth Vogel	375-4702
Landscape	Mary Lenihan	378-3518
Planning	Glenn Tanner	378-4446
Director (Past President)	Connie Sullivan	378-1554
Director (Past President)	Howard Kusters	378-4874
Director (Past President)	Inez McGee	378-5793

COPIES OF THIS NEWSLETTER ARE AVAILABLE AT THE EL RETIRO LIBRARY



**RIVIERA
HOMEOWNERS
ASSOCIATION**

P. O. Box 1074 Torrance, CA 90505-0000

**BULK RATE
U.S. POSTAGE
PAID**
Permit No. 124
Redondo Bch CA

